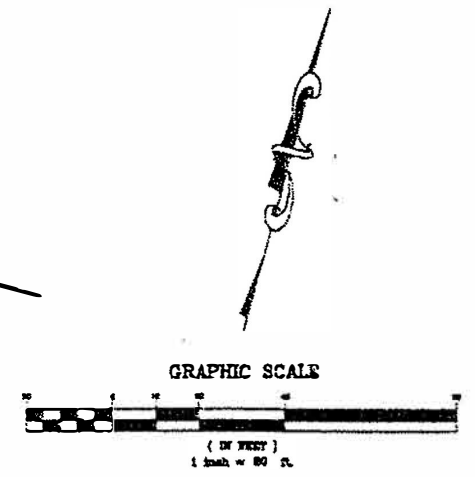
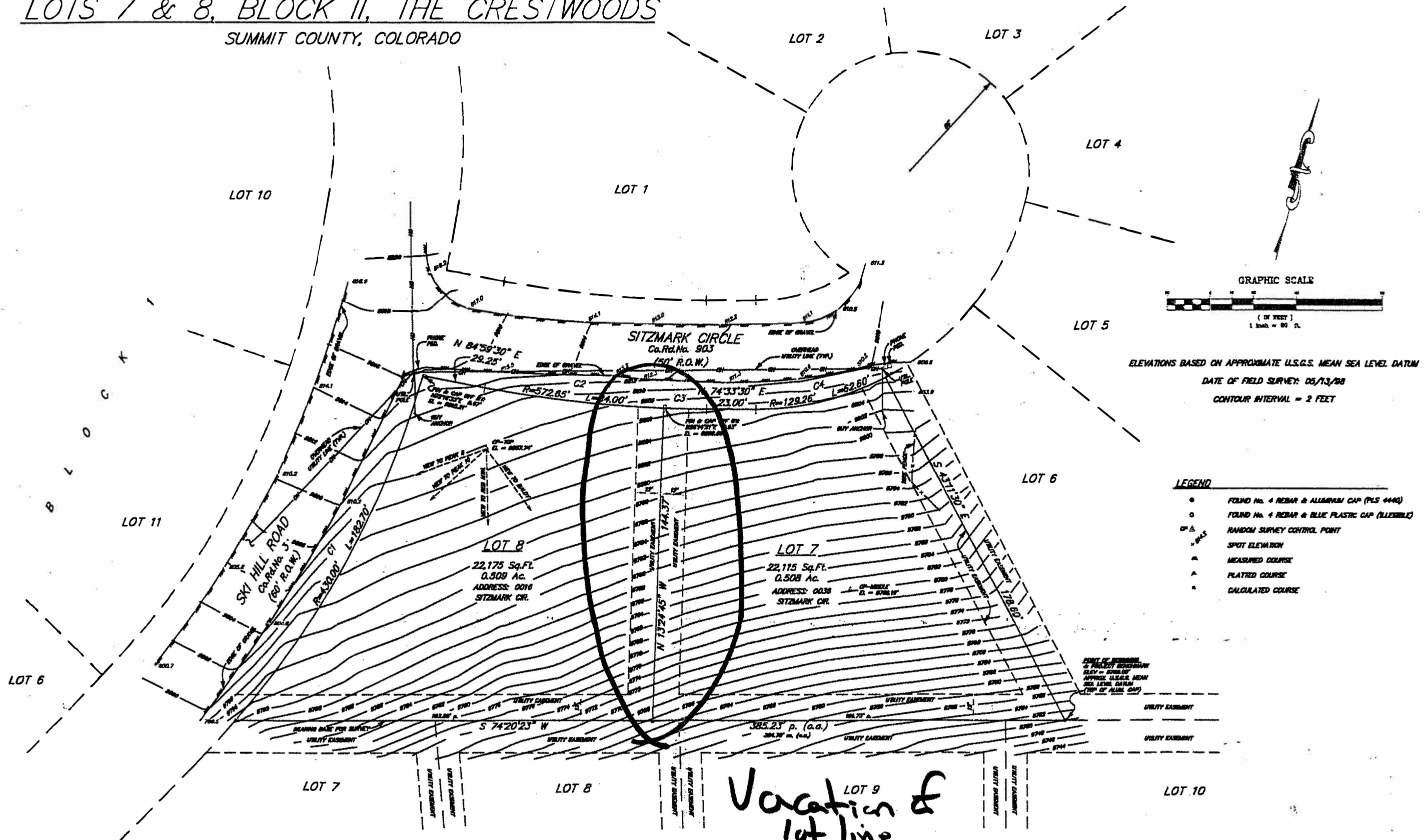


# EXHIBIT A

## LOTS 7 & 8, BLOCK II, THE CRESTWOODS SUMMIT COUNTY, COLORADO



- LEGEND**
- FOUND No. 4 REBAR & ALUMINUM CAP (PLS 4440)
  - FOUND No. 4 REBAR & BLUE PLASTIC CAP (ASSEMBLY)
  - Δ RANDOM SURVEY CONTROL POINT
  - SPOT ELEVATION
  - MEASURED COURSE
  - - - PLATTED COURSE
  - · · · · CALCULATED COURSE

**CURVE TABLE**

CURVE	CHORD	CHORD BEARING	CHORD ANGLE	CHORD DISTANCE	CHORD BEARING	CHORD ANGLE	CHORD DISTANCE
1	100.00	N 84°59'30" E	29.25°	100.00	N 84°59'30" E	29.25°	100.00
2	100.00	N 74°33'30" E	23.00°	100.00	N 74°33'30" E	23.00°	100.00
3	100.00	S 74°20'23" W	15.79°	100.00	S 74°20'23" W	15.79°	100.00

PLAT OF DISCOVERY, FILING NO. 1

*= lot line + utilities easement requesting vacation*

Drawn BY	By	Project
Checked BY	Date	Sheet
<b>RANGE WEST</b>		
SURVEYORS & ENGINEERS		
P.O. Box 629 Sterling, CO 80488 870-486-4301		