



RESOLUTION NO. 2019-36

**BOARD OF COUNTY COMMISSIONERS
OF THE
COUNTY OF SUMMIT
STATE OF COLORADO**

A RESOLUTION APPROVING PLANNING CASE #PLN19-004, A QUASI-LEGISLATIVE REZONING OF 1,670.41 ACRES IN THE UPPER BLUE BASIN, 56.96 ACRES IN THE LOWER BLUE BASIN, AND 3.29 ACRES IN THE SNAKE RIVER BASIN TO THE OPEN SPACE ZONE DISTRICT; ALL PROPERTIES ARE IN PUBLIC OWNERSHIP (APPLICANT: SUMMIT COUNTY AND TOWN OF BRECKENRIDGE)

WHEREAS, Summit County and the Town of Breckenridge have applied to the Board of County Commissioners for a quasi-legislative rezoning; and

WHEREAS, the Countywide Planning Commission has reviewed and recommended that the Board of County Commissioners approve the quasi-legislative rezoning at a public hearing on April 1, 2019; and

WHEREAS, the Board of County Commissioners has reviewed the application at a public hearing held on May 14, 2019, and considered the evidence and testimony presented at the meeting; and

WHEREAS, the Board of County Commissioners finds as follows:

1. The rezoning is in conformance with the Countywide Comprehensive Plan and Basin Master Plans with respect to preserving areas containing development constraints as open space, preserving visually important lands, providing open space buffers, and providing recreational amenities.
2. The rezoning is consistent with zoning regulations as it directly addresses the purpose and intent of the County’s zoning regulations by protecting the County’s natural resources and scenic beauty.
3. The rezoning is consistent with existing development as the subject properties have already been treated as open space, have restrictive covenants allowing only open space uses, and are enjoyed as buffers and for recreation.
4. The rezoning is consistent with the public health, safety, and welfare as it will more permanently preserve the selected properties for the benefit of the public as open space buffers, visually important lands, wildlife habitat, or for recreational trail amenities.

NOW, THEREFORE, BE IT RESOLVED BY THE BOARD OF COUNTY COMMISSIONERS OF THE COUNTY OF SUMMIT, STATE OF COLORADO, THAT A quasi-legislative rezoning of 1,670.41 acres in the Upper Blue Basin, 56.96 acres in the Lower Blue Basin, and 3.29 acres in the Snake River Basin to the Open Space zone district (as further depicted in the attached list and maps); all properties are in public ownership, is approved with the following condition:

1. Prior to recordation of the resolution finalizing the rezoning, a Memorandum of Understanding shall be executed between Summit County and the Town of Breckenridge concerning the Housing Density Extinguishment Account.

ADOPTED THIS 14TH DAY OF MAY 2019.

COUNTY OF SUMMIT
STATE OF COLORADO
BY AND THROUGH ITS
BOARD OF COUNTY COMMISSIONERS

M. C. Davidson

Davidson, Chair

ATTEST:

Kathleen Neel

Kathleen Neel, Clerk & Recorder



Map Label	DESCRIPTION	ACRES	OWNER	YEAR	ACQUIRED VIA	SCHNO	PPI	CURRENT ZONING
UPPER BLUE TDR BANK SEEDING: UPPER GALENA GULCH MINING CLAIMS								
1	TR 6-77 Sec 21 Qtr 4 Mining Claim(s) cont 20.8300 acres MERRIMAC MS# 5866 SHERMAN MS# 5866 FREE AND EASY MS# 5866 KANSAS MS# 5866 <i>MERRIMAC MS# 5866 SHERMAN MS# 5866 FREE AND EASY MS# 5866 KANSAS MS# 5866 KANSAS MS# 5866</i>	20.83	County	1999	UB Bank Seeding	2809039	2211-2140-00-006	BC
1. A PORTION OF THE NORTH FORK & MIDDLE FORK SWAN RIVER MINING CLAIMS/ESSER (SCHNO 6510517) ACQUISITION								
2	MS 11883 (BYRON PLACER, FLORENCE McGINTY, MULDOON, GEM, ESKIMO, MOGUL, NILES, CARRIE, FRACTION) TR 6-76 Sec 17 Qtr 4 Mining Claim(s) <i>BYRON PLACER MS# 11883 FLORENCE MS# 11883 McGINTY MS# 11883 MULDOON MS# 11883 GEM MS# 11883 ESKIMO MS# 11883 MOGUL MS# 11883 NILES MS# 11883 CARRIE MS# 11883 FRACTION MS# 11883</i>	139.40	TOB/County	2001	Joint UB Bank Seeding	6515880	2213-1740-00-022	BC
2. A PORTION OF THE NORTH FORK & MIDDLE SWAN RIVER MINING CLAIMS/ESSER (SCHEDULE #6510515) ACQUISITION								
3	INGELSIDE PLACER MS 12240 MAXWELL MS 12004 EVALEE MS 12004 DR HUDNUTT MS 12004 EDNA MS 12004 LAVONT MS 12004 POMPEII MS 16092 LAST CHANCE MS 18592 GAME TRAIL MS 11883 PYRITE MS 14505 TR 6-76 Sec 17 Qtr 4 Mining Claim(s) <i>INGELSIDE PLACER MS# 12240 MAXWELL MS# 12004 EVALEE MS# 12004 DR HUDNUTT MS# 12004 EDNA MS# 12004 LAVONT MS# 1200 POMPEII MS# 16092 LAST CHANCE MS# 18592 GAME TRAIL MS# 11883 GAME TRAIL MS# 11883 PYRITE MS# 14505</i>	36.40	TOB/County	2001	Joint UB Bank Seeding	6515880	2213-1740-00-022	BC
3. and 4. A PORTION OF THE NORTH FORK & MIDDLE FORK SWAN RIVER MINING CLAIMS/ESSER ACQUISITION								
4	TR 6-76 Sec 21 Qtr 2 Mining Claim(s) cont 14.630 acres IRON MOUNTAIN MS# 15381 PRINCE OF INDIA MS# 15381 16 TO1 MS# 15381 <i>IRON MOUNTAIN MS# 15381 PRINCE OF INDIA MS# 15381 16 TO1 MS# 15381</i>	14.63	TOB/County	2001	Joint UB Bank Seeding	6510509	2213-2120-00-003	BC
	VALLEY VIEW MS 17679 TR 6-76 Sec 21 Qtr 2 Mining Claim(s) <i>VALLEY VIEW MS 17679</i>	5.00	TOB/County	2001	Joint UB Bank Seeding	6515878	2213-2120-00-007	BC
	LUCKY STRIKE MS# 17679 LONE DELL MS# 17679 DOCTOR MS# 17679 TR 6-76 Sec 21 Qtr 2 Mining Claim(s) <i>LUCKY STRIKE MS# 17679 LONE DELL MS# 17679 DOCTOR MS# 17679</i>	14.84	TOB/County	2001	Joint UB Bank Seeding	6515878	2213-2120-00-007	BC
5. A PORTION OF THE NORTH FORK & MIDDLE SWAN RIVER MINING CLAIMS/ESSER (SCHEDULE #6510517) ACQUISITION								
5	TR 6-76 Sec 28 Qtr 2 Mining Claim(s) MS 16742 (NEDERLAND, RAYMOND, SNOWDRIFT, ANNA, NORTHERN SPY, EMITTE, OLIVETTE, LULU., THOMAS K) <i>NEDERLAND MS# 16742 RAYMOND MS# 16742 SNOWDRIFT MS# 16742 ANNA MS# 16742 NORTHERN SPY MS# 16742 EMITTE MS# 16742 OLIVETTE MS# 16742 LULU MS# 16742 THOMAS K MS# 16742</i>	79.80	TOB/County	2001	Joint UB Bank Seeding	6515876	2213-2820-00-004	BC
6. CARPENTER PLACER ACQUISITION								
6	CARPENTER PLACER MS 328, DISCOVERY EXTENSION SW MS 4226 TR 6-77 Sec 28 Qtr 1 Mining Claim(s) <i>CARPENTER PLACER MS 328 DISCOVERY EXTENSION SW MS 4226</i>	154.31	TOB/County	1999	Joint UB Bank Seeding	6516023	2211-2810-00-007	BC
7. WEST SIDE BALDY MOUNTAIN CLAIMS/ERDMANN ACQUISITION								
7	TR 7-77 Sec 10 Qtr 2 Mining Claim(s) cont 19.5300 acres VULCAN MS# 12171 VULCAN #1 MS# 12171 VULCAN #2 MS# 12171 VULCAN #3 MS# 12171 <i>VULCAN MS# 12171 VULCAN #1 MS# 12171 VULCAN #2 MS# 12171 VULCAN #3 MS# 12171</i>	19.53	TOB/County	2000	Joint UB Bank Seeding	6512017	2371-1020-00-021	BC
	TR 7-77 Sec 10 Qtr 1 Mining Claim(s) cont 9.2800 acres DOUBLE STANDARD MS# 12210 MORNING STAR MS# 12210 <i>DOUBLE STANDARD MS# 12210</i>	9.28	TOB/County	2000	Joint UB Bank Seeding	6512015	2371-1010-00-022	BC

Map Label	DESCRIPTION	ACRES	OWNER	YEAR	ACQUIRED VIA	SCHNO	PPI	CURRENT ZONING
	MORNING STAR MS# 12210							
8. GEORGIA PASS MINING CLAIMS ACQUISITIONS								
8	TR 7-76 Sec 06 Qtr 4 Mining Claim(s) cont 4.4100 acres WAHPETON MILLSITE MS# 19202B Acres 4.4100	4.41	TOB/County	2001	Joint UB Bank Seeding	3009128	2369-0640-00-001	BC
9., 11., and 12. EAST OF GOLD RUN GULCH MINING CLAIMS/BRUNS ACQUISITION, KIPP, AND LEVY ACQUISITIONS								
9	ARAB BAGDAD CALPH DAMASCUS MS 13399TR 6-77 Sec 28 Qtr 1 Mining Claim(s)	12.89	TOB/County	2001	Joint UB Bank Seeding	6516023	2211-2810-00-007	BC
	ARAB MS# 13399							
	BAGDAD MS# 13399							
	CALPH MS# 13399							
	DAMASCUS MS# 13399							
10. EAST OF GIBSON GULCH CLAIMS/MISSION ENTERPRICES ACQUISITION								
10	TR 6-77 Sec 32 Qtr 2 Mining Claim(s) cont 10.7000 acres VALHALLA MS# 17955A WHITE PLAINS MS# 17955A WESTCHESTER MS# 17955A	10.70	TOB/County	2001	Joint UB Bank Seeding	6510505	2211-3220-00-008	BC
	VALHALLA MS# 17955A							
	WHITE PLAINS MS# 17955A							
	WESTCHESTER MS# 17955A							
13. SUMMIT GULCH MINING CLAIMS/ROBINSON ACQUISITION								
11	TR 6-77 Sec 22 Qtr 2 Mining Claim(s) cont 131.3900 acres ALMIRA MS# 16264 Acres 42.5800 CACHE MS# 16264 CLARA MS# 16264 DON JUAN MS# 16264 FREE GOLD MS# 16264 FREE GOLD 1&2 MS# 16264 MAPLE LEAF MS# 16264 PRAIRIE DALE MS# 16264 STORMS PLACER MS# 5758 Acres 15.2400	34.67	TOB/County	2001	Joint UB Bank Seeding	6516013	2211-2220-00-024	BC
	ALMIRA MS# 16264							
	CLARA MS# 16264							
	PRAIRIE DALE MS# 16264							
	DON JUAN MS# 16264							
	FREE GOLD NO. 1 MS# 16264							
	FREE GOLD NO. 2 MS# 16264							
	MAPLE LEAF MS# 16264							
	CACHE MS# 16264							
	FAWN MS# 14071							
	DOE MS# 14071							
	MOOSE MS# 14071							
14. GALENA MINING CLAIMS/FRANSEN-RICHARDS ACQUISITION								
12	SUMMIT, KT, JOHN BELL, LAFE PENCE, WEAVER, GALENA, ERGO, SWAN MS 12017 TR 6-77 Sec 28 Qtr 1 Mining Claim(s)	38.04	TOB/County	2001	Joint UB Bank Seeding	6516023	2211-2810-00-007	BC
	SUMMIT MS# 12017							
	KT MS# 12017							
	JOHN BELL MS# 12017							
	LAFE PENCE MS# 12017							
	WEAVER MS# 12017							
	GALENA MS# 12017							
	ERGO MS# 12017							
	SWAN MS# 12017							
15. MIDDLE FORK OF THE SWAN & QUANDARY CLAIMS ACQUISITION								
13	Big Copper Lode, U.S. Mineral Survey No. 3048, Diamond Jack Lode, U.S. Mineral Survey No. 2563, Highline Lode, U.S. Mineral Survey No. 16742, Franklin Lode, U.S. Mineral Survey No. 11883, and Bullion Lode, U.S. Mineral Survey No. 17679.	25.58	TOB/County					
	FRANKLIN MS 11883 TR 6-76 Sec 17 Qtr 4 Mining Claim(s)	5.68	TOB/County	2002	Joint UB Bank Seeding	6515880	2213-1740-00-022	BC
	FRANKLIN MS# 11883							
	HIGHLINE MS 16742 TR 6-76 Sec 28 Qtr 2 Mining Claim(s)	6.70	TOB/County	2002	Joint UB Bank Seeding	6515876	2213-2820-00-004	BC
	HIGHLINE MS# 16742							
	TR 7-78 Sec 35 Qtr 3 Mining Claim(s) cont 5.160 acres BIG COPPER MS# 3048 Acres 5.160	5.16	TOB/County	2002	Joint UB Bank Seeding	6510994	2373-3530-00-031	BC
	BIG COPPER MS# 3048							
	BULLION MS# 17679 TR 6-76 Sec 21 Qtr 2 Mining Claim(s)	4.84	TOB/County	2002	Joint UB Bank Seeding	6515878	2213-2120-00-007	BC
	BULLION MS# 17679							
	TR 7-78 Sec 35 Qtr 3 Mining Claim(s) cont 5.160 acres DIAMOND JACK MS# 2563 Acres 5.160	5.16	TOB/County	2002	Joint UB Bank Seeding	6510992	2373-3530-00-032	BC
	DIAMOND JACK MS# 2563							
16. MT. GUYOT CLAIMS ACQUISITION								
14	TR 7-76 Sec 06 Qtr 3 Mining Claim(s) cont 25.8200 acres WAHPETON NO 1 MS# 19202A Acres 5.1600 WAHPETON NO 2 MS# 19202A Acres 5.1600 WAHPETON NO 3 MS# 19202A Acres 5.1600 WAHPETON NO 4 MS# 19202A Acres 5.1600 WAHPETON NO 5 MS# 19200	25.82	TOB/County	2002	Joint UB Bank Seeding	6511002	2369-0630-00-003	BC
	WAHPETON NO 1 MS# 19202A							
	WAHPETON NO 2 MS# 19202A							
	WAHPETON NO 3 MS# 19202A							
	WAHPETON NO 4 MS# 19202A							
	WAHPETON NO 5 MS# 19202A							
17. WHITE TOP LODE CLAIM ACQUISITION								
15	WHITE TOP MS 5363-A TR 6-77 Sec 33 Qtr 3 Mining Claim(s)	5.14	TOB/County	2003	Joint UB Bank Seeding	6516025	2211-3330-00-064	BC
	WHITE TOP MS 5363-A							
18. PORTION OF GALENA PLACER/MORRIS ACQUISITION								
16	TR 6-77 Sec 16 Qtr 4 Mining Claim(s) cont 15.650 acres GALENA PLACER MS# 12475 Acres 15.650	15.65	TOB/County	2003	Joint UB Bank Seeding	6511599	2211-1640-00-006	A-1
	GALENA PLACER MS# 12475							

Map Label	DESCRIPTION	ACRES	OWNER	YEAR	ACQUIRED VIA	SCHNO	PPI	CURRENT ZONING
19. MJ LODE CLAIM ACQUISITION								
17	TR 8-78 Sec 02 Qtr 2 Mining Claim(s) cont 4.0700 acres M J LODE MS# 4393 Acres 4.0700 MJ LODE MS# 4393	4.07	TOB/County	2004	Joint UB Bank Seeding	6511620	2483-0220-00-006	BC
20. PARKVILLE SUBDIVISION/SOUTHERN LOTS (PORTION) ACQUISITION								
18	LOT 6 and 7 BLOCK 1 PARKVILLE SUB 1	2.40	TOB/County	2002	Joint UB Bank Seeding	6510990	2211-2510-06-001	BC
21. RIDGE NO. 1 LODE								
19	TR 7-77 Sec 27 Qtr 2 Mining Claim(s) cont 4.740 acres RIDGE NO 1 LODE MS# 2231 Acres 4.740 RIDGE LODE MS# 2231	4.74	TOB/County	2004	Joint UB Bank Seeding	6511939	2371-2720-00-004	BC
22. CLEOPATRA LODES AND SUMMIT GULCH CLAIMS								
20	ANTELOPE DEER ELK CARIBOU REINDEER MS14071 TR 6-77 Sec 22 Qtr 2 Mining Claim(s) ANTELOPE MS# 14071 DEER MS# 14071 ELK MS# 14071 CARIBOU MS# 14071 REINDEER MS# 14071	24.40	TOB/County	2004	Joint UB Bank Seeding	6516013	2211-2220-00-024	BC
	TR 6-77 Sec 28 Qtr 1 Mining Claim(s) cont 10.3300 acres CLEOPATRA MS# 8529 Acres 5.1650 CLEOPATRA #1 MS# 8529 Acres 5.1650 CLEOPATRA MS# 8529 CLEOPATRA #1 MS# 8529	10.33	TOB/County	2004	Joint UB Bank Seeding	2803677	2211-2810-00-001	BC
23. DASH WARREN AND JOHN SHOCK LODES								
21	TR 6-77 Sec 20 Qtr 4 Mining Claim(s) cont 4.6500 acres DASH WARREN LODE MS# 14298 JOHN SHOCK LODE MS# 14298 WARREN LODE MS# 14298 JOHN SHOCK LODE MS# 14298	4.65	TOB/County	2004	Joint UB Bank Seeding	2809311	2211-2040-00-018	BC
24. PARKVILLE SUBDIVISION/NORTHERN AND SOUTHERN LOTS (PORTION)								
22	LOT 1-5 BLOCK 1 PARKVILLE SUB 1	5.08	TOB/County	2002- 2003	Joint UB Bank Seeding	6510990	2211-2510-06-001	BC
25. PARKVILLE SUBDIVISION/SOUTHERN LOTS PORTION								
23	LOT 4-7 BLOCK 5 PARKVILLE SUB 1	3.53	TOB/County	2002	Joint UB Bank Seeding	6510990	2211-2510-06-001	BC
26. PARKVILLE SUBDIVISION/SOUTH LOTS PORTION								
24	LOT 8-9 BLOCK 5 PARKVILLE SUB 1	1.93	TOB/County	2002	Joint UB Bank Seeding	6510990	2211-2510-06-001	BC
27. PARKVILLE SUB								
25	LOT 1-11 BLOCK 2, LOT 4-11 BLOCK 3, LOT 1-3 BLOCK 5 PARKVILLE SUB 1	18.32	TOB/County	2006	Joint UB Bank Seeding	6510990	2211-2510-06-001	BC
28. GIBSON HILL TDR SENDING SITES								
26	Undivided 50% Interest TR 6-77 Sec 28 Qtr 1 Mining Claim(s) cont 1034.2276 acre ANNIE C MS# 8378 Acres 5.1650 ARLING MS# 7144 Acres 4.4150 BADEN BADEN MS# 3794 Acres 5.1600 BERLIN MS# 6873 Acres 5.0620 BERTHA D MS# 8378 Acres 5.1650 BULLION MS# 8076 Acres 4.9980 CECIL C MS# 8378 Acres 5.0420 CLARAL MS# 8378 Acres 5.1650 COLUMBIA MS# 8378 Acres 5.1400 CORA E MS# 8378 Acres 5.9100 DISCOVERY CLEVELAND MS# 5156 JACK MS# 4278 R.A. GARDNER MS# 9030 BUFFALO MS# 4007 SMALL HOPES MS# 4255 LAST CHANCE MS# 4256 HENDRIX MS# 3845 DISCOVERY DOUBLE EXTENSION MS# 3953 MASCOTT MS 4828 CONSOLIDATION MS# 13767	40.86	TOB/County	2012	Joint UB Bank Seeding	2804033	2211-2920-00-002	BC
29. LOTS 1-3 AND 12-14, BLOCK 3 PARKVILLE, ANACONDA AND DAISY PLACER, ROMANCE CLAIMS, CAMP BIRD, WHITE CLOUD LODE, JULY, IRONSIDE, AND GOLD BUG, EAST OF GOLD RUN GULCH/MUNSHAW-SLIDE, LOU P, and FELLAH								
27	Lots 1-3 and 12-14, Block 3 Parkville, Anaconda and Daisy Placer, Romance Claims, Camp Bird, White Cloud, July, Ironside and Gold Bug, East of Gold Run Gulch/Munshaw - Slide, Lou P, and Fellah.	122.31	TOB/County	2015	Joint UB Bank Seeding	6510990	2211-2510-06-001	BC
	LOT 12 BLOCK 3 PARKVILLE SUB 1	0.92	TOB/County	2015	Joint UB Bank Seeding	6510990	2211-2510-06-001	BC
	LOT 14 BLOCK 3 PARKVILLE SUB 1	1.35	TOB/County	2015	Joint UB Bank Seeding	6510990	2211-2510-06-001	BC
	Lots 1-3 and 12-14, Block 3 Parkville CAMP BIRD MS# 8313 WHITE CLOUD MS# 8313 GOLD BUG MS# 8313 JULY MS# 8313 IRONSIDE MS# 8313		TOB/County	2015	Joint UB Bank Seeding	6516023	2211-2810-00-007	BC
	ROMANCE CLAIMS LITTLE COPORAL MS# 6450 HINDOO MS# 6445 TIP TOP MS# 6719 MASTODON MS# 6719 ROMANCE MS# 6719 SALINA MS# 6719 MORNING STAR MS# 6811 CROESUS MS# 6450		TOB/County	2015	Joint UB Bank Seeding	6516023	2211-2810-00-007	BC

Map Label	DESCRIPTION	ACRES	OWNER	YEAR	ACQUIRED VIA	SCHNO	PPI	CURRENT ZONING
	CANFIELD MS# 6450							
	ATHOS MS# 6450							
	ALICE MS# 6577							
	DAISY PLACER MS 17532 TR 8-77 Sec 06 Qt	37.42	TOB/County	2015	Joint UB Bank Seeding	6515872	2485-0630-00-006	A-1
	DAISY PLACER MS# 17532							
	TR 6-77 Sec 26 Qtr 1 Mining Claim(s) cont 1034.2276 acre ANNIC C MS# 8378 Acres 5.1650 ARLING MS# 7144 Acres 4.4150 BADEN BADEN MS# 3794 Acres 5.1600 BERLIN MS# 6873 Acres 5.0620 BERTHA D MS# 8378 Acres 5.1650 BULLION MS# 8076 Acres 4.9980 CECIL C MS# 8378 Acres 5.0420 CLARAL MS# 8378 Acres 5.1650 COLUMBIA MS# 8378 Acres 5.1400 CORA E MS# 8378 Acres 5.9100 DISCOVERY EXTENSION MS# 4225 Acres 5.1600 EMMA K MS# 8378 Acres 5.1650 GLENWOOD MS# 7748 Acres	1034.23		2015	Joint UB Bank Seeding	6516023	2211-2810-00-007	BC
	SLIDE MS# 7143		TOB/County					
	LOU. P MS# 7143		TOB/County					
	FELLAH MS# 13399		TOB/County					

30. Larium Claims

28	TR 7-77 Sec 09 Qtr 1 Mining Claim(s) cont 104.3300 acres LAURIUM MS# 2673 WEST LAURIUM MS# 2674 WALKER MS# 4247 DEXTER MS# 5395 ALICE E MS# 12362 LAURIUM NO 2 MS# 12362 LAURIUM NO 3 MS# 12362 ILLINOIS MS# 13636 EXCELSIOR MS# 2045 ALSO IN SECTIONS 3 & 4-7-77	99.37	TOB/County	2017	Joint UB Bank Seeding	6516342	2371-0910-00-002	BCA1
	WEST LAURIUM MS# 264							
	LAURIUM MS# 2673							
	WALKER MS# 4247							
	DEXTER MS# 5395							
	ALICE E MS# 12362							
	LAURIUM NO 2 MS# 12362							
	LAURIUM NO 3 MS# 12362							
	ILLINOIS MS# 13636							
	EXCELSIOR MS# 2045							
	EXCELSIOR MS 2045 TR 7-77 Sec 09 Qt	4.96	TOB/County	2017	Joint UB Bank Seeding	6516342	2371-0910-00-002	A-1
	EXCELSIOR MS 2045							

32a. FRENCH GULCH CLAIMS AND BOSS AND DANDY

29	French Gulch Claims TR 6-77 Sec 33 Qt	309.96	TOB/County	2018	Joint UB Bank Seeding	6516025	2211-3330-00-064	BC
	16 to 1 MS# 11781A&B	2.01						
	Dirigo MS# 11781A&B	3.48						
	Rising Moon MS# 11781A&B	4.57						
	Sincoe MS# 11781A&B	4.21						
	Carrie Lasalle MS# 18650A	2.55						
	Cub MS# 18650AMS#	3.18						
	Wellington #3 MS# 18650A	0.08						
	Wellington Ext MS# 18650A	0.75						
	Brown Mill Site MS# 18650B	12.94						
	Mattie MS# 2771A	3.77						
	Jackson MS# 12069	5.00						
	Rose of Breckenridge MS# 3128A	5.16						
	Rose of Breckenridge MS# 3128B	5.56						
	Greenwood MS# 3395A	3.98						
	Cincinnati Mill MS# 3395B	3.08						
	French Gulch Placer MS# 3589A	8.31						
	X-10-U-8 #2 MS# 7615A	1.49						
	Sam Clark MS# 8026A&B	1.86						
	Davis Mill Site MS# 8026B	3.76						
	X-10-U-8 MS# 186	5.17						
	Andromeda MS# 3189	5.06						
	Brown Birdie MS# 7671	5.44						
	Cassiopea MS# 3187	5.14						
	Chief MS#5798	5.16						
	Colorado MS# 2995	5.17						
	Cross MS# 7892	3.49						
	Deadwood MS# 4435	5.03						
	Diamond Dick MS# 5798	3.33						
	Die Vernon MS# 3188	4.49						
	Alla MS# 5503	5.02						
	Great Northern MS# 2545	4.99						
	Grey Horse MS# 2284	5.16						
	Iron Mask MS# 1717	3.92						
	Kentucky MS# 2772	3.53						
	Liberty MS# 11696	5.11						
	Little Lizzie MS# 3125	5.16						
	Lucky MS# 2325	5.00						
	Minnie MS# 3602	3.99						
	Nutmeg MS# 7671	4.83						
	Old Tennessee MS# 7872	5.17						

Map Label	DESCRIPTION	ACRES	OWNER	YEAR	ACQUIRED VIA	SCHNO	PPI	CURRENT ZONING
	Oro MS# 5798	4.48						
	Orthodox 2 MS# 7615	4.60						
	Orthodox 3 MS# 7615	3.36						
	Orthodox Mill Site MS# 7615	2.73						
	Paducah MS# 2294	5.16						
	Peoria MS# 2655	5.16						
	Robley Lode MS# 242	5.16						
	Siam MS# 5798	5.16						
	Silver Head MS# 3126	5.16						
	Silver Star MS# 3190	4.11						
	Wellington MS# 7343	4.28						
	White Pine MS# 3167	5.16						
	Outlet MS# 11876	1.56						
	Tecumseh MS# 11876	3.21						
	Tom Price MS# 3190	3.65						
	Truax MS# 11876	2.34						
	Cuba MS# 12069	5.10						
	Havana MS# 12069	3.05						
	Mono MS# 12069	3.05						
	Prize Box MS# 13499	4.69						
	Czar MS# 15108	2.57						
	Gold MS# 15108	1.19						
	Mckinley MS# 17559	3.22						
	Captain MS# 19165	3.70						
	Wyoming MS# 19166	1.49						
	Bunkhouse MS# 20128	1.32						
	Fraction MS# 20128	1.99						
	Kathleen MS# 20128	2.85						
	Mavoureen MS# 20128	2.42						
	Golden Rule MS# 14121							
	Adelaide MS# 6193							
	Auckland MS# 6193							
	Brisbane MS# 6193							
	Dunedin MS# 6193							
	Manila MS# 6193							
	Melbourne MS# 6193							
	Sydney MS# 6193	32.96						
	Dandy and Boss MS 2675 and MS 2677 TR 6-77 Sec 32 Qtr 1 Mining Claim(s) con	8.59	County	2018	Joint UB Bank Seeding	2809165	2211-3210-00-011	BC
	DANDY MS# 2675							
	BOSS MS# 2675							

32b. Wetland Lots PLN18-104

30	LOT 1 BLOCK 1 QUANDARY VILLAGE SUB # 1	0.51	TOB/County	2018	Joint UB Bank Seeding	2801395	2483-0130-09-010	R-2
	LOT 2 BLOCK 1 QUANDARY VILLAGE SUB # 1	0.51	TOB/County	2018	Joint UB Bank Seeding	2801396	2483-0130-09-009	R-2
	LOT 3 BLOCK 1 QUANDARY VILLAGE SUB # 1	0.51	TOB/County	2018	Joint UB Bank Seeding	2801397	2483-0130-09-008	R-2
	LOT 4 BLOCK 1 QUANDARY VILLAGE SUB # 1	0.51	TOB/County	2018	Joint UB Bank Seeding	2801398	2483-0130-09-007	R-2
	LOT 5 BLOCK 1 QUANDARY VILLAGE SUB # 1	0.51	TOB/County	2018	Joint UB Bank Seeding	2801399	2483-0130-09-006	R-2
	LOT 6 BLOCK 1 QUANDARY VILLAGE SUB # 1	0.51	TOB/County	2018	Joint UB Bank Seeding	2801400	2483-0130-09-005	R-2
	LOT 6 BLOCK 3 QUANDARY VILLAGE SUB # 1	0.52	TOB/County	2018	Joint UB Bank Seeding	2801413	2483-0130-11-006	R-2
	LOT 5 BLOCK 3 QUANDARY VILLAGE SUB # 1	0.53	TOB/County	2018	Joint UB Bank Seeding	2801412	2483-0130-11-007	R-2
	LOT 4 BLOCK 3 QUANDARY VILLAGE SUB # 1	0.53	TOB/County	2018	Joint UB Bank Seeding	2801411	2483-0130-11-008	R-2
	LOT 12 BLOCK 7 ALPINE BRECKENRIDGE SUB #	0.53	County	2018	Joint UB Bank Seeding	2801210	2483-1210-03-007	R-1

PRIVATE PARTY: BALDY RIDGE ESTATES TDR

	Parcel A: The Alice Day Lode, U.S. Survey No. 6851; Gordon Miner Day Lode, U.S. Survey No. 6851; Louise Day Lode, U.S. Survey No. 6851; Lillian Lode, U.S. Survey No. 6850; and Lady Saunders Lode, U.S. Survey No. 4434. Parcel B: King Solomon Lode, U.S. Mineral Survey No. 5363A and Three Links Lode, U.S. Mineral Survey No. 5363A; each being a part of Section 3, Township 7 South, Range 77 West of the 6th P.M. Parcel C: Being parts of Sections 23, 26, and 27, Township 7 South, Range 77 West, being the Silver Queen Lode, M.S. Survey No. 2222.	39.39	TOB/County					
31	THREE LINKS MS 5363-A TR 6-77 Sec 33 Qtr 3 Mining Claim(s)	3.46	TOB/County	2004	Private Party TDR	6516025	2211-3330-00-064	BC
	THREE LINKS MS# 5363-A							
	TR 7-77 Sec 03 Qtr 2 Mining Claim(s) cont 5.1650 acres KING SOLOMON MS# 5363A	5.17	TOB/County	2004	Private Party TDR	6510389	2371-0320-00-007	BC
	KING SOLOMON MS# 5363A							
	TR 7-77 Sec 15 Qtr 1 Mining Claim(s) cont 15.480 acres ALICE DAY MS# 6851	15.48	TOB/County	2004	Private Party TDR	6510397	2371-1510-00-007	BC
	GORDON MINER DAY MS# 6851 LOUISE DAY MS# 6851							
	ALICE DAY MS# 6851							
	GORDON MINER DAY MS# 6851							
	LOUISE DAY MS# 6851							
	TR 7-77 Sec 23 Qtr 2 Mining Claim(s) cont 5.160 acres SILVER QUEEN MS# 2222	5.16	TOB/County	2004	Private Party TDR	6510399	2371-2320-00-013	BC
	SILVER QUEEN MS# 2222							

Map Label	DESCRIPTION	ACRES	OWNER	YEAR	ACQUIRED VIA	SCHNO	PPI	CURRENT ZONING
	TR 7-77 Sec 09 Qtr 4 Mining Claim(s) cont 5.160 acres LILLIAN MS# 6850 LILLIAN MS# 6850	5.16	TOB/County	2004	Private Party TDR	6510395	2371-0940-00-003	BC
	TR 7-77 Sec 22 Qtr 2 Mining Claim(s) cont 5.120 acres LADY SAUNDERS MS# 4434 LADY SAUNDERS MS# 4434	5.12	TOB/County	2004	Private Party TDR	6510401	2371-2220-00-001	BC

PRIVATE PARTY: BLUE RIVER CORKSCREW TDR THE NEW YORK-HARUM MINING CLAIMS

32	Blue River Corkscrew TDR	153.73						
	MAURINE, ARDATH, BOY, THELMA, WORMWOOD, CARVEL, HARUM MS 12461 TR 6-77 Sec 28 Qtr 1 Mining Claim(s) MAURINE MS# 12461 ARDATH MS# 12461 BOY MS# 12461 THELMA MS# 12461 WORMWOOD MS# 12461 CARVEL MS# 12461 HARUM MS# 12461	36.75	TOB/County	2004	Private Party TDR	6516023	2211-2810-00-007	BC
	NEW YORK, BROOKLYN, OREGON, IOWA, TEXAS, GLOUCESTER, SCHLEY MS 14153 TR 6-77 Sec 28 Qtr 1 Mining Claim(s) NEW YORK MS# 14153 BROOKLYN MS# 14153 OREGON MS# 14153 IOWA MS# 14153 TEXAS MS# 14153 GLOUCESTER MS# 14153 SCHLEY MS# 14153	36.11	TOB/County	2004	Private Party TDR	6516023	2211-2810-00-007	BC
	LIGHTBURN, WHALE, LUCILLE, MAMMOTH, LITTLE HARRY, IRONSIDE, O.K., FLORENCE, BUFFALO, AGGIE, ELLSWORTH, LUCKY, GOLD STANDARD, CLIMAX, TREASURE, JANICE MS 12461 TR 6-77 Sec 28 Qtr 1 Mining Claim(s) LIGHTBURN MS# 12461 WHALE MS# 12461 LUCILLE MS# 12461 MAMMOTH MS# 12461 LITTLE HARRY MS# 12461 IRONSIDE MS# 12461 O.K. MS# 12461 FLORENCE MS# 12461 BUFFALO MS# 12461 AGGIE MS# 12461 ELLSWORTH MS# 12461 LUCKY MS# 12461 GOLD STANDARD MS# 12461 CLIMAX MS# 12461 TREASURE MS# 12461 JANICE MS# 12461	80.72	TOB/County	2004	Private Party TDR	6516023	2211-2810-00-007	BC

PARCEL ASSEMBLAGE PLN15-055

33	TR 6-77 Sec 35 Qtr 3 Mining Claim(s) cont 1.7220 acres HANNA MS# 6766 Acres 1.7220 HANNA MS# 6766	1.72	TOB/County	2015	Parcel Assemblage	6516781	2211-3530-00-025	BC
	TR 6-77 Sec 34 Qtr 4 Mining Claim(s) cont 1.7200 acres ELLA G MS# 6766 Acres 1.7200 ELLA G MS#6766	1.72	TOB/County	2015	Parcel Assemblage	6516787	2211-3440-00-015	BC
	TR 7-77 Sec 27 Qtr 3 Mining Claim(s) cont 5.1600 acres FOURTH OF JULY LODE MS# 4886 Acres 5.1600 FORTH OF JULY LODE MS# 4886	5.16	TOB/County	2015	Parcel Assemblage	6516779	2371-2730-00-007	BC
	TR 6-77 Sec 34 Qtr 4 Mining Claim(s) cont 1.7200 acres CLARA W MS# 6766 Acres 1.7200 CLARA W MS# 6766	1.72	TOB/County	2015	Parcel Assemblage	6516775	2211-3440-00-016	BC
	TR 6-77 Sec 35 Qtr 3 Mining Claim(s) cont 1.7220 acres HORTON MS# 6766 Acres 1.7220 HORTON MS# 6766	1.72	TOB/County	2015	Parcel Assemblage	6516783	2211-3530-00-026	BC
	TR 6-77 Sec 34 Qtr 4 Mining Claim(s) cont 1.7120 acres JAMES G CARLISLE MS# 6766 Acres 1.7120 JAMES G CARLISLE MS# 6766	1.71	TOB/County	2015	Parcel Assemblage	6516789	2211-3440-00-018	BC
	TR 6-77 Sec 34 Qtr 4 Mining Claim(s) cont 1.7200 acres ROGER Q MILLS MS# 6766 Acres 1.7200 ROGER Q MILLS MS# 6766	1.72	TOB/County	2015	Parcel Assemblage	6516785	2211-3440-00-017	BC
	TR 7-77 Sec 27 Qtr 3 Mining Claim(s) cont 4.9200 acres SARATOGA MILL SITE MS# 4886B Acres 4.9200 SARATOGA MILL SITE MS# 4886B	4.92	TOB/County	2015	Parcel Assemblage	6516777	2371-2730-00-006	BC

PARCEL ASSEMBLAGE PLN16-035

34	TR 6-77 Sec 22 Qtr 2 Mining Claim(s) cont 4.6000 acres GULCH LODE MS# 11889 Acres 4.6000 GULCH LODE MS# 11889	4.60	County	2016	Parcel Assemblage	2809319	2211-2220-00-018	BC
	TR 7-77 Sec 27 Qtr 4 Mining Claim(s) cont 4.6660 acres JOSEPHINE LODE MS# 4420 Acres 4.6660 JOSEPHINE LODE MS# 4420	4.67	County	2016	Parcel Assemblage	2809042	2371-2740-00-009	BC
	TR 7-77 Sec 27 Qtr 4 Mining Claim(s) cont 12.7700 acres GEM OF THE SAND ROCK MS# 4419 Acres 5.1600 LOOKOUT MS# 11933 Acres 4.2420 EMPIRE MS# 3543 Acres 3.3680 GEM OF THE SAND ROCK MS# 4419	12.77	County	2016	Parcel Assemblage	2804072	2371-2740-00-011	BC

Map Label	DESCRIPTION	ACRES	OWNER	YEAR	ACQUIRED VIA	SCHNO	PPI	CURRENT ZONING
	LOOKOUT MS# 11933 EMPIRE MS# 3543							

TDR WETLAND LOTS

35	LOT 95 VALLEY OF THE BLUE SUB	0.50	TOB/County	2016	Wetland	2801812	2485-0620-01-032	R-2
	LOT 17 BLOCK 2 ALPINE BRECKENRIDGE SUB # 1	0.51	TOB/County	2015	Wetland	2801169	2483-0140-23-016	R-1
	LOT 17 BLOCK 4 ALPINE BRECKENRIDGE SUB # 1	0.52	County	2013	Wetland	2800098	2483-0140-22-010	R-1
	LOT 16 BLOCK 4 ALPINE BRECKENRIDGE SUB # 1	0.51	County	2013	Wetland	2800097	2483-0140-22-011	R-1
	LOT 2 BLOCK 7 ALPINE BRECKENRIDGE SUB # 2	0.53	TOB/County	2015	Wetland	2802131	2483-0140-19-008	R-1
	LOT 3 BLOCK 7 ALPINE BRECKENRIDGE SUB # 2	0.50	TOB/County	2015	Wetland	2802132	2483-0140-19-007	R-1
	LOT 7 BLOCK 5 QUANDARY VILLAGE SUB # 2	0.50	TOB/County	2015	Wetland	2801594	2483-1220-10-024	R-2
	LOT 7 BLOCK 2 QUANDARY VILLAGE SUB # 2 UNDIVIDED 50% INTEREST	0.50	TOB/County	2015	Wetland	6517095	2483-1210-12-005	R-2
	LOT 26 BLOCK 4 QUANDARY VILLAGE SUB # 2	0.50	TOB/County	2015	Wetland	2801562	2483-1220-11-027	R-2
	LOT 27 BLOCK 4 QUANDARY VILLAGE SUB # 2	0.50	TOB/County	2015	Wetland	2801563	2483-1220-11-028	R-2
	LOT 38 BLOCK 4 QUANDARY VILLAGE SUB # 2	0.50	TOB/County	2015	Wetland	2801574	2483-1220-11-039	R-2
	LOT 37 BLOCK 4 QUANDARY VILLAGE SUB # 2	0.50	TOB/County	2015	Wetland	2801573	2483-1220-11-038	R-2
	LOT 16 BLOCK 2 QUANDARY VILLAGE SUB # 2	0.50	TOB/County	2015	Wetland	2800905	2483-1210-12-018	R-2
	LOT 51 BLOCK 3 QUANDARY VILLAGE SUB # 2	0.50	TOB/County	2015	Wetland	2800583	2483-1220-07-031	R-2
	LOT 50 BLOCK 3 QUANDARY VILLAGE SUB # 2	0.50	TOB/County	2015	Wetland	2801544	2483-1220-07-030	R-2
	LOT 48 BLOCK 3 QUANDARY VILLAGE SUB # 2	0.66	TOB/County	2015	Wetland	2801542	2483-1220-07-028	R-2
	LOT 22 BLOCK 2 QUANDARY VILLAGE SUB # 2	0.50	TOB/County	2015	Wetland	2801512	2483-1210-12-012	R-2

OPEN SPACE & TRAILS: COBB & EBERTT PLACER ACQUISITION (PURCHASED WITH GOCO FUNDS)

36	Cobb & Ebert Placer MS 340	121.25	TOB/County	2005	GOCO Grant OS	6516025	2211-3330-00-064	BC
----	----------------------------	--------	------------	------	---------------	---------	------------------	----

OPEN SPACE & TRAILS: JOHN J PLACER

37	JOHN J PLACER MS 1284 TR 6-77 Sec 33 Qtr 3 Mining Claim(s)	16.99	TOB/County	2013	Open Space OSGIS 2188	6516025	2211-3330-00-064	A-1
----	--	-------	------------	------	-----------------------	---------	------------------	-----

OPEN SPACE & TRAILS: JUMBO Millsite

38	TR 6-77 Sec 20 Qtr 3 Mining Claim(s) cont 3.0000 acres JUMBO MS# 4252 Acres 3.0000	3.00	TOB/County - 63/37	2012	OST 2142	6515860	2211-2030-00-012	BC
	JUMBO MS# 4252							

OTHER PROPERTIES UPPER BLUE

39	PARCEL B COYNE PLACER VALLEY SUB (aka Barton Gulch)	11.62	TOB/County	2016	Open Space OSGIS 2195	2800666	2209-2440-05-001	R-4
40	In PLACER ACRES SUB GREEN AREA CONT. 4.84 AC OPEN SPACE TRACT A GOLDEN EDGE SUB TR 7-77 Sec 03 Qtr 4 Mining Claim(s) cont 49.1460 acres GOLDEN EDGE LODE NO 2 MS# 12390 GOLDEN EDGE LODE NO 3 MS# 12390 GOLDEN EDGE LODE NO 4 MS# 12390 BLACKHAWK MS# 12390 FLAGSTAFF MS# 12390 GOLDEN EDGE PLACER MS# 12390	4.84	County	1975	Open Space OSGIS 2103	4008154	2209-2510-16-001	R-4
41	OPEN SPACE TRACT C GOLDEN EDGE SUB TR 7-77 Sec 03 Qtr 4 Mining Claim(s) cont 49.1460 acres GOLDEN EDGE LODE NO 2 MS# 12390 GOLDEN EDGE LODE NO 3 MS# 12390 GOLDEN EDGE LODE NO 4 MS# 12390 BLACKHAWK MS# 12390 FLAGSTAFF MS# 12390 GOLDEN EDGE PLACER MS# 12390	13.64	TOB/County	2019		2809057	2371-0340-00-011	BC
42	OPEN SPACE TRACT B GOLDEN EDGE SUB TR 7-77 Sec 03 Qtr 4 Mining Claim(s) cont 49.1460 acres GOLDEN EDGE LODE NO 2 MS# 12390 GOLDEN EDGE LODE NO 3 MS# 12390 GOLDEN EDGE LODE NO 4 MS# 12390 BLACKHAWK MS# 12390 FLAGSTAFF MS# 12390 GOLDEN EDGE PLACER MS# 12390	21.18	TOB/County	2019		2809057	2371-0340-00-011	BC
43	OPEN SPACE TRACT A GOLDEN EDGE SUB TR 7-77 Sec 03 Qtr 4 Mining Claim(s) cont 49.1460 acres GOLDEN EDGE LODE NO 2 MS# 12390 GOLDEN EDGE LODE NO 3 MS# 12390 GOLDEN EDGE LODE NO 4 MS# 12390 BLACKHAWK MS# 12390 FLAGSTAFF MS# 12390 GOLDEN EDGE PLACER MS# 12390	2.31	TOB/County	2019		2809057	2371-0340-00-011	BC
44	TR 6-77 Sec 07 Qtr 4 Mining Claim(s) cont 9.1480 acres MONROE PLACER MS# 1150 AKA LOTS 1-7 TATUM TRACTS 7-6-77	9.15	TOB/County	1993, 1995	Open Space	6515882	2211-0740-00-008	A-1
45	LOT 1 COYNE PLACER VALLEY SUB TR 7-77 Sec 05 Qtr 2 Mining Claim(s) cont 14.7900 acres OLD IRONSIDES	0.27	County	2016	Open Space OSGIS 2195	2801709	2209-2440-05-002	R-4
46	MS# 7388 BEN HARRISON MS# 7388 COUNTESS MS# 7388 AGGIE MS# 7388	14.79	TOB/County	2002	OSGIS 2049	6510391	2371-0520-00-001	A-1
47	LOT 10 PLACER ACRES SUB	1.07	TOB/County	2015	Open Space OSGIS 2206	6517099	2209-2510-16-013	R-2
48	TRACT A QUANDARY VILLAGE SUB # 2	9.68	TOB/County			2801495	2483-1210-06-017	A-1

LOWER BLUE

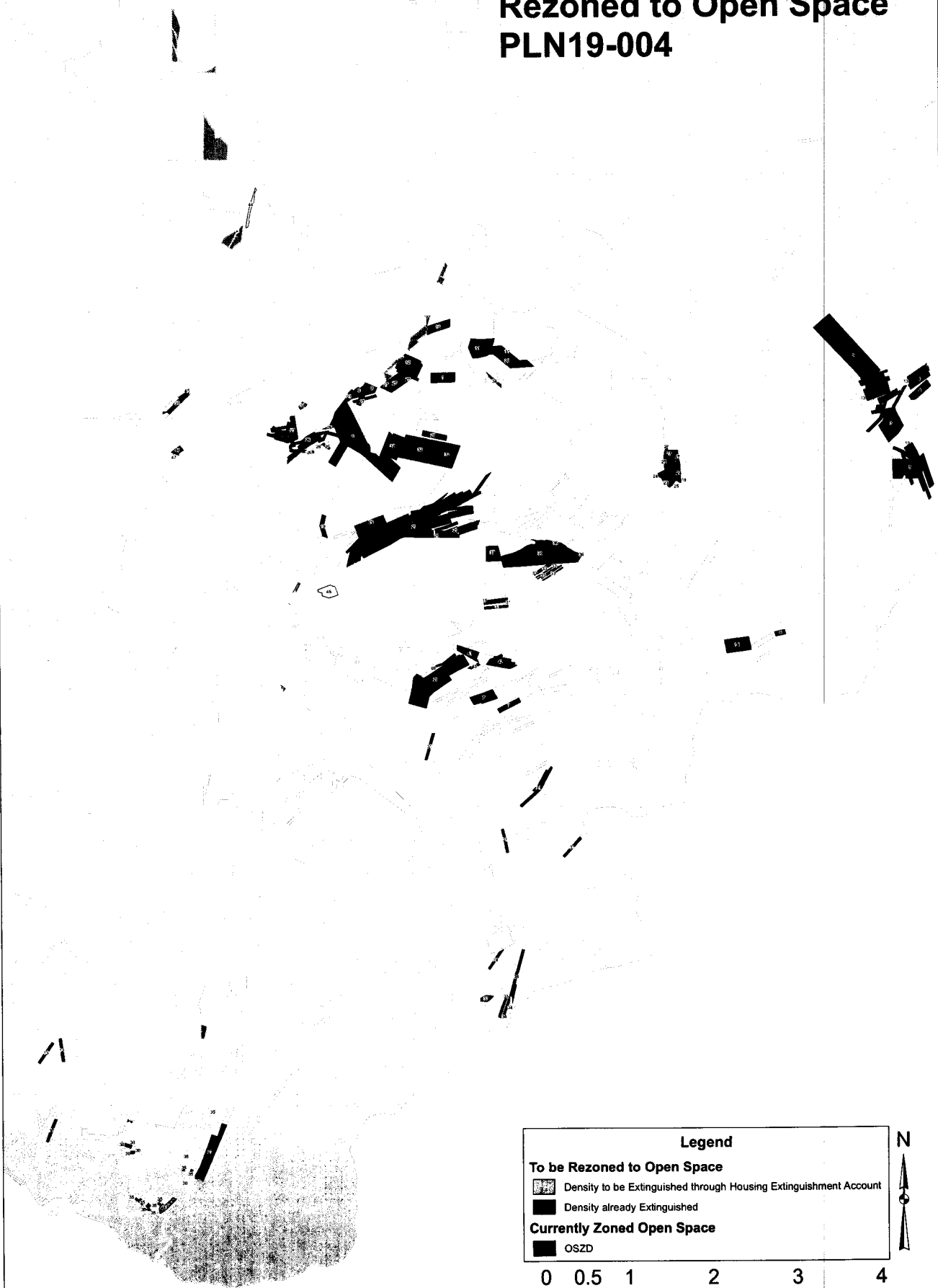
49	TR 5-78 Sec 12 Qtr 2 Acres 2.4610 AKA TRACT IN SEC 1 AND SEC 12-5-78	2.461	County	2016	OSGIS 54	1301093	2097-1220-00-002	A-1
50	TR 5-78 Sec 12 Qtr 3 Acres 10.0000	10	County	2016	OSGIS 56	1300481	2097-1230-00-001	A-1
51	TR 2-79 Sec 34 Qtr 4 Acres 165.3499 TR 2-79 SEC 34 QTR 2 35.23 ACRES TR 2-79 SEC 34 QTR 4 44.54 ACRES TR 2-79 SEC 35 QTR 3 80.02 ACRES	44.50	County	2009	OSGIS 41	6515987	1697-3440-00-020	A-1

SNAKE

52	Piney Acres Lots 12, 13 and 14, Block 1, Filing No. 1	3.29	County	2019		3000238/2 39/240	2095-0710-15-014/- 013/ 2095-0720-02- 001	R-2
----	---	------	--------	------	--	---------------------	---	-----

This map is for display purposes only. Do not use for legal conveyance. Not necessarily accurate by surveying standards, and does not comply with National Mapping Accuracy Standards.
©2019 Summit County Development

Properties in the Upper Blue Basin to be Rezoned to Open Space PLN19-004



Legend

To be Rezoned to Open Space

- Density to be Extinguished through Housing Extinguishment Account
- Density already Extinguished

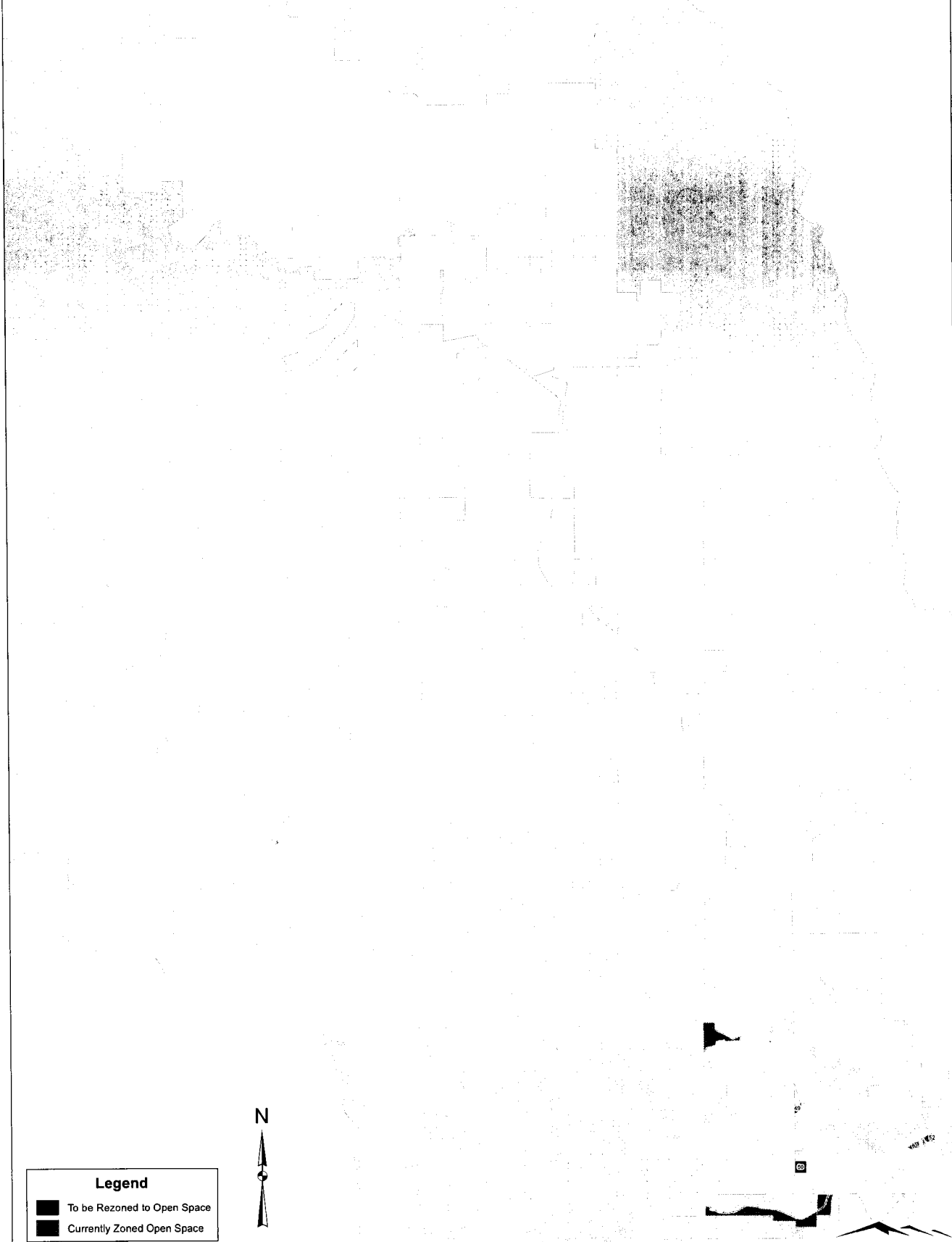
Currently Zoned Open Space

- OSZD

0 0.5 1 2 3 4 Miles

N

Lower Blue and Snake River Basins to be Rezoned to Open Space PLN19-004



Legend
■ To be Rezoned to Open Space
■ Currently Zoned Open Space



0 0.5 1 2 3 4 Miles

SUMMIT COUNTY

This map is for display purposes only. Do not use for legal conveyance. Not necessarily accurate by surveying standards, and does not comply with National Mapping Accuracy Standards.
©2019 Summit County Government